

MIRASOL PARCEL TWENTY-TWO

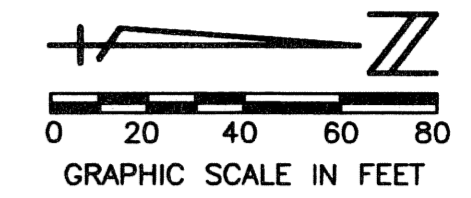
PART OF MIRASOL P.C.D.
BEING IN SECTION 03, TOWNSHIP 42 SOUTH, RANGE 42 EAST,
CITY OF PALM BEACH GARDENS,
PALM BEACH COUNTY, FLORIDA
SHEET 3 OF 4

129

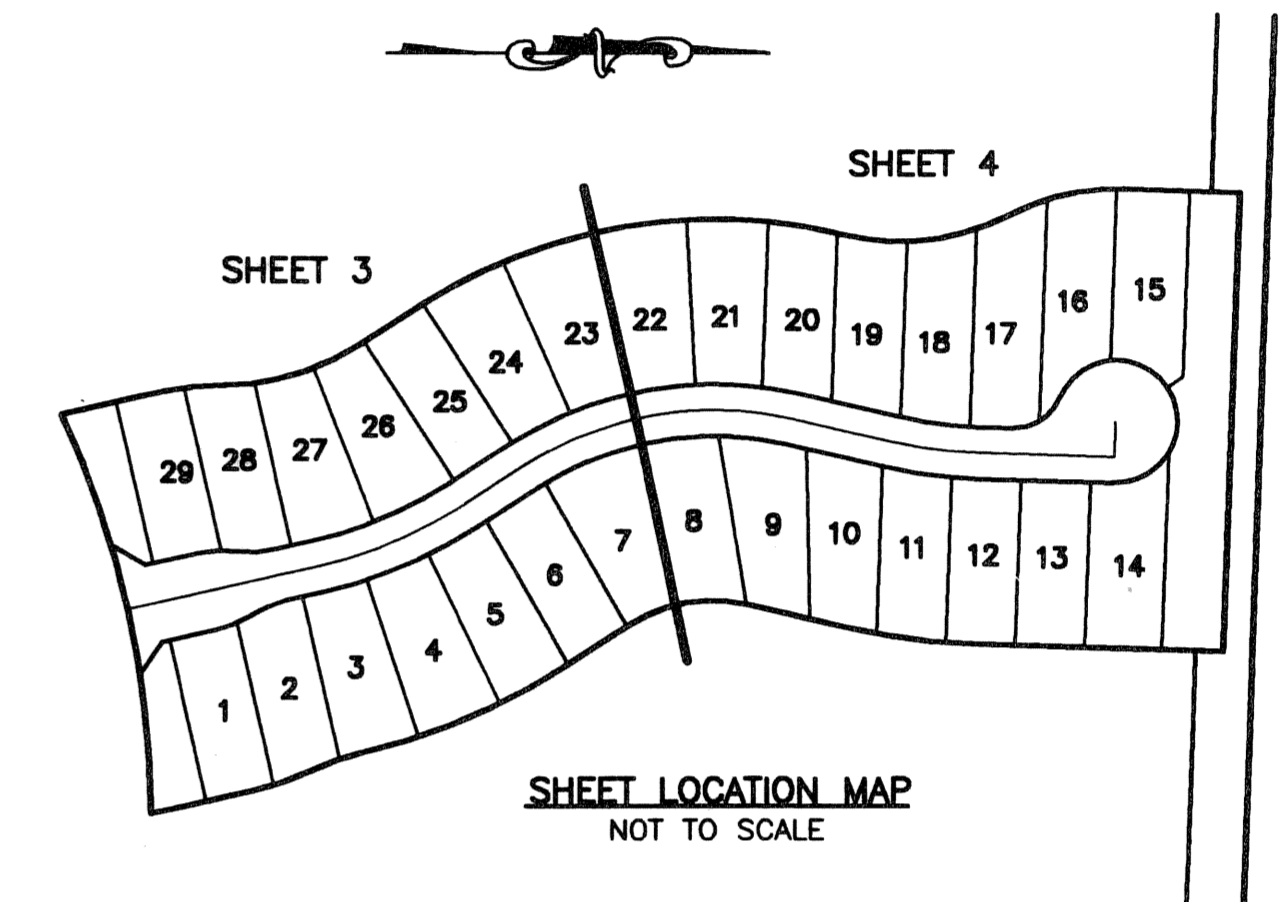
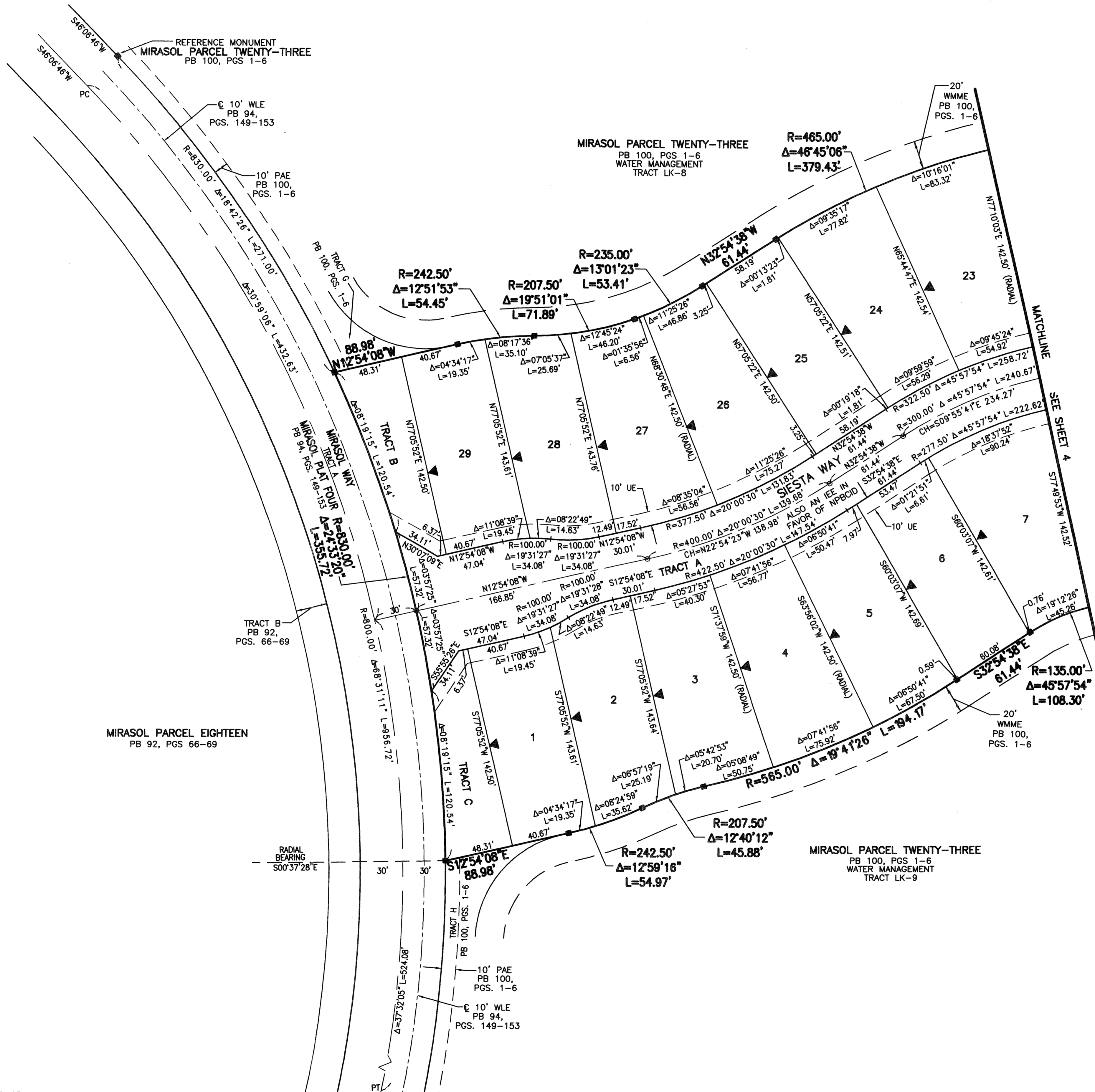
STATE OF FLORIDA
COUNTY OF PALM BEACH

THIS PLAT WAS FILED FOR
RECORD _____
THIS _____ DAY OF _____
AD, 2005 AND DULY RECORDED
IN PLAT BOOK _____ ON PAGE(S)
_____ AND _____

SHARON R. BOCK,
CLERK & COMPTROLLER
BY: _____, D.C.



CIRCUIT COURT SEAL



- LEGEND**
- Δ CENTRAL (DELTA) ANGLE
 - CH CHORD BEARING AND DISTANCE
 - DE DRAINAGE EASEMENT
 - IEE INGRESS-EGRESS EASEMENT
 - L ARC LENGTH
 - NPBCID NORTHERN PALM BEACH COUNTY IMPROVEMENT DISTRICT
 - ORB OFFICIAL RECORD BOOK
 - PAE PEDESTRIAN ACCESS EASEMENT
 - PB PLAT BOOK
 - PC POINT OF CURVATURE
 - PCD PLANNED COMMUNITY DEVELOPMENT
 - PG(S) PAGE(S)
 - PT POINT OF TANGENCY
 - R RADIUS
 - SLE SEWER LINE EASEMENT
 - UE UTILITY EASEMENT
 - WLE WATER LINE EASEMENT
 - WMMME WATER MANAGEMENT MAINTENANCE EASEMENT
 - PERMANENT REFERENCE MONUMENT FOUND LB 048 (4" x 4" CONCRETE)
 - PERMANENT REFERENCE MONUMENT SET LB 048 (4" x 4" CONCRETE)
 - PERMANENT CONTROL POINT SET LB 048
 - ⊙ CENTERLINE
 - ⊕ SECTION QUARTER CORNER

THIS INSTRUMENT WAS PREPARED BY MANUEL A. GUTIERREZ, P.S.M. IN THE OFFICES OF MOCK, ROOS & ASSOCIATES, INC., 5720 CORPORATE WAY, WEST PALM BEACH, FLORIDA 33407.

SCALE:
1" = 40'
P.A. NO.:
99379.00
DATE:
JULY 2004
DRAWING NO.
42-42-03-139

MOCK • ROOS
ENGINEERS • SURVEYORS • PLANNERS

5720 Corporate Way, West Palm Beach, Florida 33407
(561) 683-3113, fax 478-7248

MIRASOL PARCEL TWENTY-TWO
PART OF MIRASOL P.C.D.
BEING IN SECTION 03,
TOWNSHIP 42 SOUTH, RANGE 42 EAST,
CITY OF PALM BEACH GARDENS,
PALM BEACH COUNTY, FLORIDA

SHEET 3 OF 4

REVISED: 05-02-05
CADD FILE:
S:\proj\104922\dwg\p22p02.dwg